

GB ORDERLINE

For placing orders, delivery enquiries and local stockists etc.
T 0800 373636
F 01275 377700
E orderline@siniat.co.uk

LITERATURELINE

For Siniat literature.
T 01275 377582
E literatureline@siniat.co.uk

THE TRAINING CENTRE

For all drywall training needs from basic introduction to advanced skills and development.
T 01275 377581
F 01275 377402
E training@siniat.co.uk

IRELAND ORDERLINE

For placing orders, delivery enquiries and local stockists etc.
T +353 (0)1 6203114
F +353 (0)1 6203117
E irelandorders@siniat.com

TECHNICAL ENQUIRYLINE

Technical advisory service.
T 01275 377789
F 01275 377456
E enquiryline@siniat.co.uk

GTEC® WASTELINE DIRECT

Plasterboard waste management enquiries.
T 01275 377579
F 01275 774950
E gtecwasteline@siniat.co.uk



BS Plus



Plasterboard, jointing and associated products made in the United Kingdom by Siniat are manufactured in accordance with management systems certified to BS EN ISO 9001:2008 (quality) and BS EN ISO 14001:2004 (environment)

Photography and images used in this document are for reference purpose only and may not directly relate to the specific product and applications

Siniat Ltd Marsh Lane, Easton-in-Gordano, Bristol BS20 0NF
Technical Enquiryline T +44 (0)1275 377789 F +44 (0)1275 377456
E enquiryline@siniat.co.uk www.siniat.co.uk

GTEC®

**Aqua Board
WATER RESISTANT
BOARD FOR
WET AREAS**

an **etex** company

GTEC AQUA BOARD PLASTERBOARD FOR WET OR HUMID AREAS

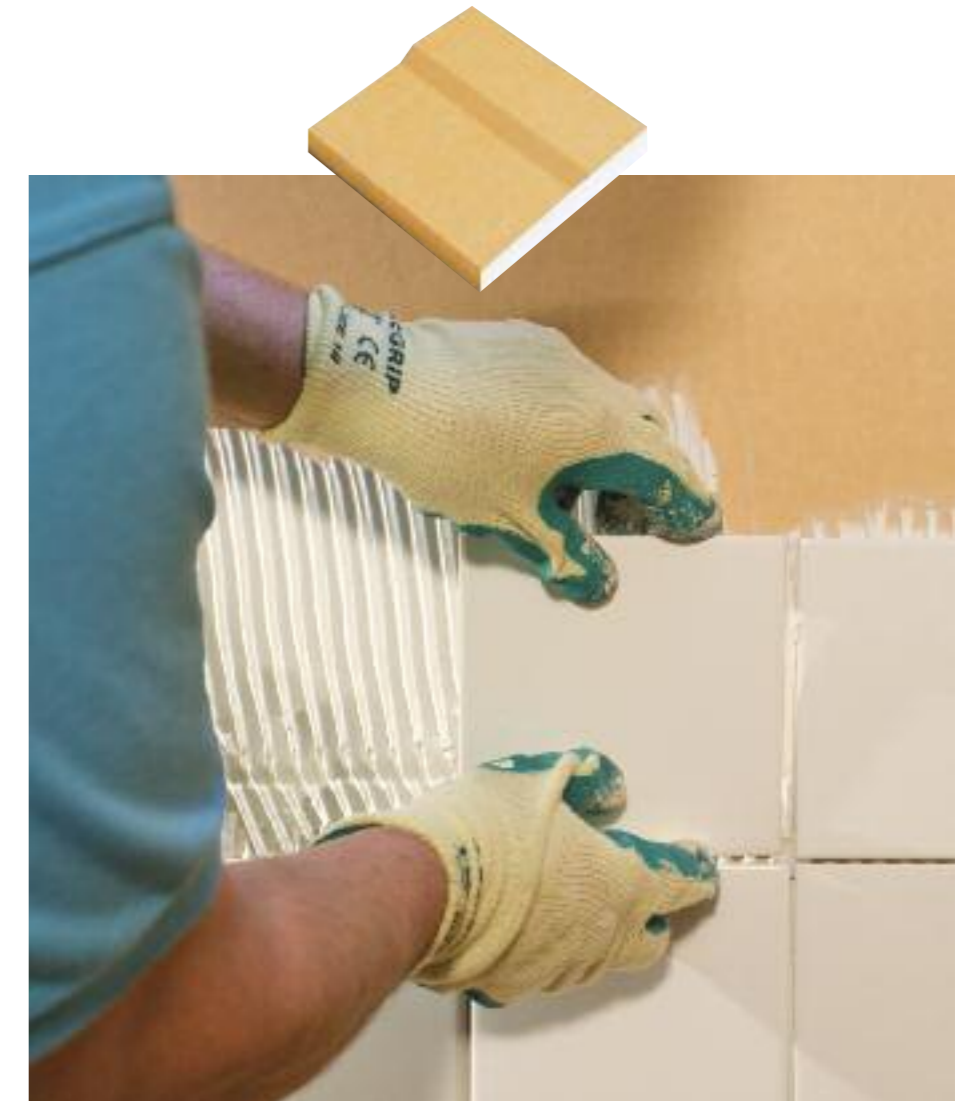
Designed as an alternative to traditional cement particle boards, GTEC Aqua Board provides many benefits for areas of commercial and domestic use.

All the benefits of a cementitious board without the compromise:

- ✓ **Fully mould and fungus resistant** making it ideal as a tile backing board for wet or humid areas
- ✓ **Resistance to extreme humidity** making it suitable for commercial applications such as swimming pools
- ✓ **Score and snap** - no need for power tools or segregated cutting area, helping to reduce installation time and costs
- ✓ **Lightweight**, gypsum based board ensuring ease of handling and fixing
- ✓ **Smooth facing board** can be directly tiled or painted
- ✓ **High fire and sound resistance** from a single boarded system

"...it was very useful to have GTEC Aqua Board on-site so early in the project before the building was weathertight. It's incredible - very easy to use and I would definitely recommend it."

Richard Hawkes, Architect,
Crossway Eco-House Project, Kent



APPLICATIONS

GTEC Aqua board is the board of choice when it comes to wet area applications for even the most demanding of projects.

Ideal as a tile backing board or alternatively can be painted within kitchen or bathroom applications. It is also suitable for extremely humid environments such as swimming pools and health spas.

SECTORS AND EXAMPLES

MEDIUM HUMIDITY
Housing - Kitchens and toilets



RATHER HIGH HUMIDITY
Housing - Bathrooms, garages and unheated cellars



HIGH HUMIDITY
Housing - Bathroom with jacuzzi
Public buildings - Shower for collective use



SEVERE HUMIDITY
Housing - Internal private swimming pool
Public buildings - Swimming pools and health spas



BOARD PERFORMANCE

Full accredited to relevant UK and European standards, GTEC Aqua Board provides outstanding levels of performance in line with the ever increasing technical and commercial challenges faced by the construction industry.

	Description	12.5mm board performance	15mm board performance
General	Mass	10.8kg/m ²	
		1200mm x 850mm = 11kg	1200mm x 2400mm = 39kg
		1200mm x 2700mm = 39kg	
		1200mm x 3000mm = 35kg	
Mechanics	Flexural breaking load in Longitudinal direction	>500N	>600N
	Flexural breaking load in Transverse direction	>250N	>300N
Fire	Reaction to fire in accordance with EN 13501-1	Euroclass A2- s1,d0	Euroclass A2- s1,d0
	Thermal conductivity R in accordance with EN 12524	0.25 W/mK	0.25 W/mK
Thermal	Thermal resistance R	0.05 m ² K/W	0.06 m ² K/W
	Permeability		
Permeability	Mean water vapour permeability	220 g/m ² /day	-
	Water vapour resistance μ factor in accordance with EN 12572	11	-
Moisture resistance	Moisture content	<1%	<1%
	Size variation at 20°C and 65% RH to 90% RH in accordance with BS EN 318 in longitudinal direction	0.15mm/m	0.15mm/m
	Size variation at 20°C and 65% RH to 90% RH in accordance with BS EN 318 in transverse direction	0.11mm/m	0.11mm/m
Mould resistance	Mould resistance according to ASTM D 3273	No mould growth	No mould growth

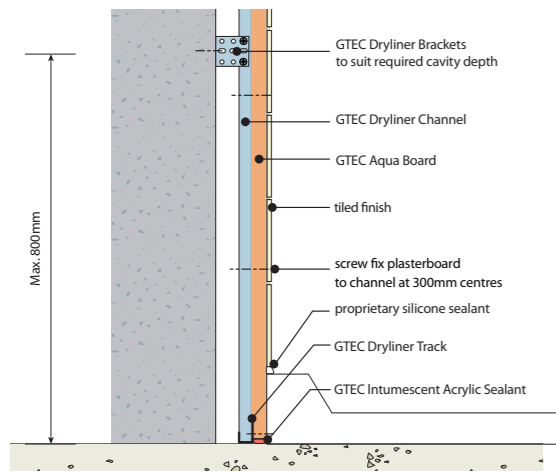
SYSTEM PERFORMANCE

System reference and components	System weight (kg/m ²)	Maximum height (m)	Overall thickness (mm)	Fire performance BS 476-22 (mins) BS EN 1364-1	Strength duty rating to BS 5234-2	Acoustic performance R _w dB (C _r if applicable)
RAP 004: C stud partition 	23	3.2	95	30 EI 30	Medium	46
RAP 001: C stud partition 	28	3.6	100	60 EI 60	Severe	40
RAP 003: C stud partition 	28	3.6	100	60 EI 60	Severe	46
RMAP 050: C stud partition 	44	4.4	120	60 EI 60	Severe	56

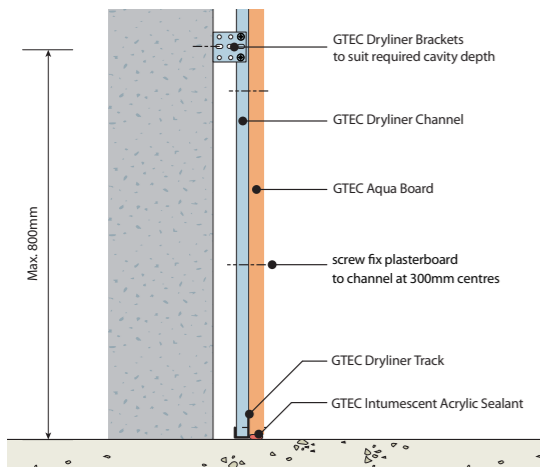
Aqua Board can replace the final layer of boarding to transform standard systems into water resistant partitions or linings. Contact Technical Enquiryline for more details.

TYPICAL DETAILS

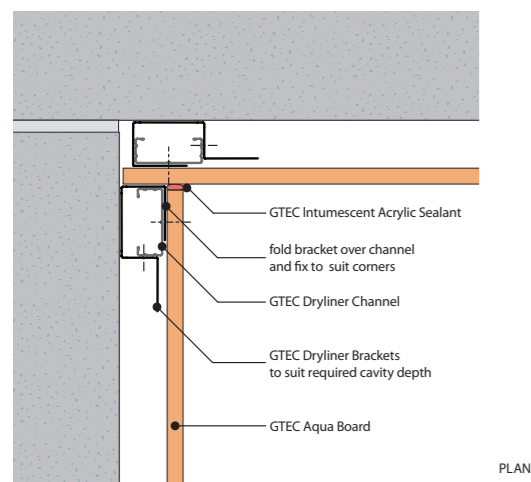
Lining Base Shower Tray



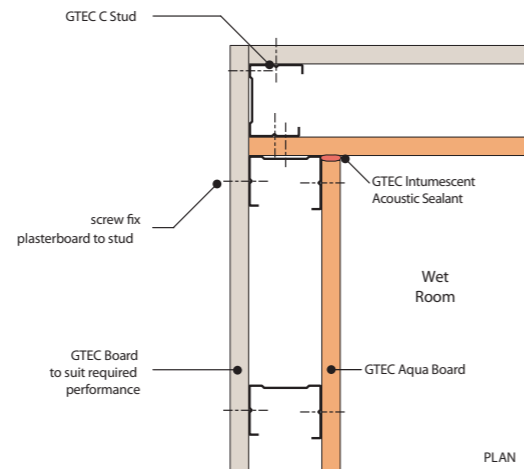
Lining Base



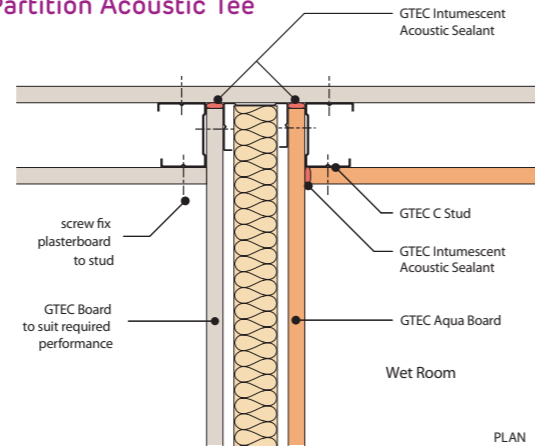
Lining Corner



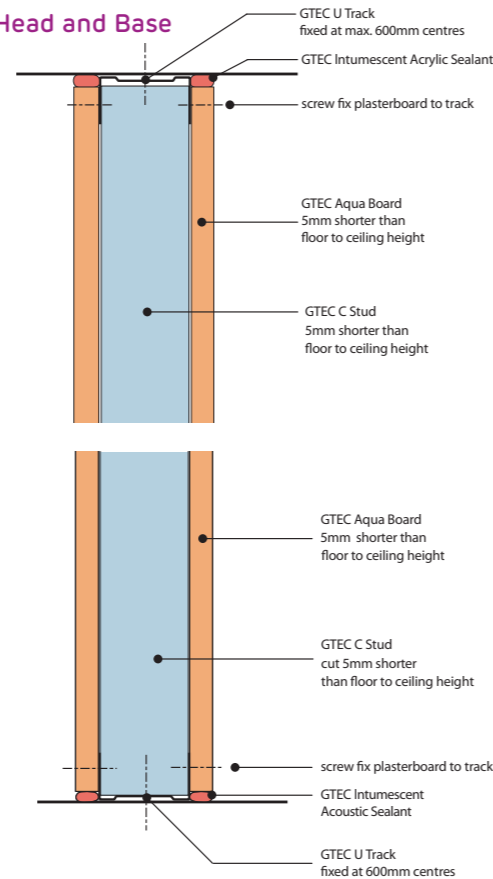
Partition Corner



Partition Acoustic Tee



Partition Head and Base



INSTALLATION

The beauty of GTEC Aqua Board is that it installs just like standard plasterboard. The following steps outline installation details.

For more detailed installation instructions, please contact Technical Enquiry Line on 01275 377789 or visit www.siniat.co.uk.

1. GTEC Studs & Tracks

GTEC Studs and Tracks should be installed in accordance with the recommendations set out in the Drywall Manual. For tiled partitions, stud should be located at maximum 400mm centres.

2. GTEC Aqua Board

Fix with GTEC Aqua Performance Screws to the framing at a maximum of 300mm centres.

To maximise the acoustic and fire performance of the system use GTEC intumescent acoustic sealant and seal between the perimeters and GTEC Aqua Board at the vertical abutments, the head and base.

2.1 Jointing

Apply GTEC Aquamix compound to the tapered joint. Cut the GTEC Joint Tape to the required length, centre the GTEC Joint Tape over the GTEC Aqua Board joint and bed tape into the Aquamix compound. Apply GTEC Aquamix compound to the GTEC Aqua Board joint, covering the GTEC Joint Tape with approximately 1 mm of GTEC Aquamix compound. Strike off flush with the GTEC Aqua Board face and allow to dry. Once fully dry, apply a second coat of GTEC Aquamix compound over the first coat and feather out 50 – 60mm wider than the first coat of GTEC Aquamix compound and allow drying.

Once fully dry, apply a finish coat of GTEC Aquamix over the second coat and feather out 50 – 60mm wider than the second coat of GTEC Aquamix.

2.2 jointing external vertical corners
Cut the GTEC Corner 90° External (tape on bead) to the required length. Apply a 50mm wide band of GTEC Aquamix compound on each side of the external corner. Bed the GTEC Corner 90° External into the GTEC Aquamix compound. Once bedded, cover each side of the GTEC Corner 90° External with a 100mm band of GTEC Aquamix, feathered out onto the GTEC Aqua Board face, and allow to dry. Once fully dry, apply a second coat of GTEC Aquamix compound over the first coat and feather out 50 – 60mm wider than the first coat of GTEC Aquamix compound and allow drying. Once fully dry, apply a finish coat of GTEC Aquamix over the second coat and feather out 50 – 60mm wider than the second coat of GTEC Aquamix.

3. Sealing the base of partitions or linings in High and Severe Exposure Areas

Cut the GTEC Aquastrip reinforcement strip to the required length. Using a long haired roller apply a generous coat of GTEC Drywall Sealer to the bottom of the partition or lining approximately 100mm from the floor and a generous coat of GTEC Drywall Sealer to the floor, approximately 200mm. Note: The floor may require an adhesive primer.

Apply the length of GTEC Aquastrip reinforcement tape into the GTEC Drywall Sealer, folding along the joint approximately 50/50mm. The GTEC Aquastrip reinforcement strips are applied using a scraper or plasterer's trowel, being careful to avoid creases. When two lengths of GTEC Aquastrip meet, ensure they are overlapped by at least 50 mm. Allow 3 to 4 hours, and then apply a second generous coat of GTEC Drywall Sealer to cover the first.

3.1 Additional Application Required in Severe Exposure Areas Only

Apply two coats of GTEC Drywall Sealer to entire surface of GTEC Aqua Board. Allow 3 to 4 hours to dry, then apply the second coat.

4. GTEC Aqua Board

4.1 Tiling finish
Ceramic and glazed tiles can be fixed directly onto the GTEC Aqua Board system. The tile adhesive should be waterproof and suitable for plasterboard substrates. Tiles with less than 5% water absorption are recommended.

4.2 Paint finish
For non-tiled areas, where a paint finish is required, a suitable proprietary paint for that area can be applied directly.

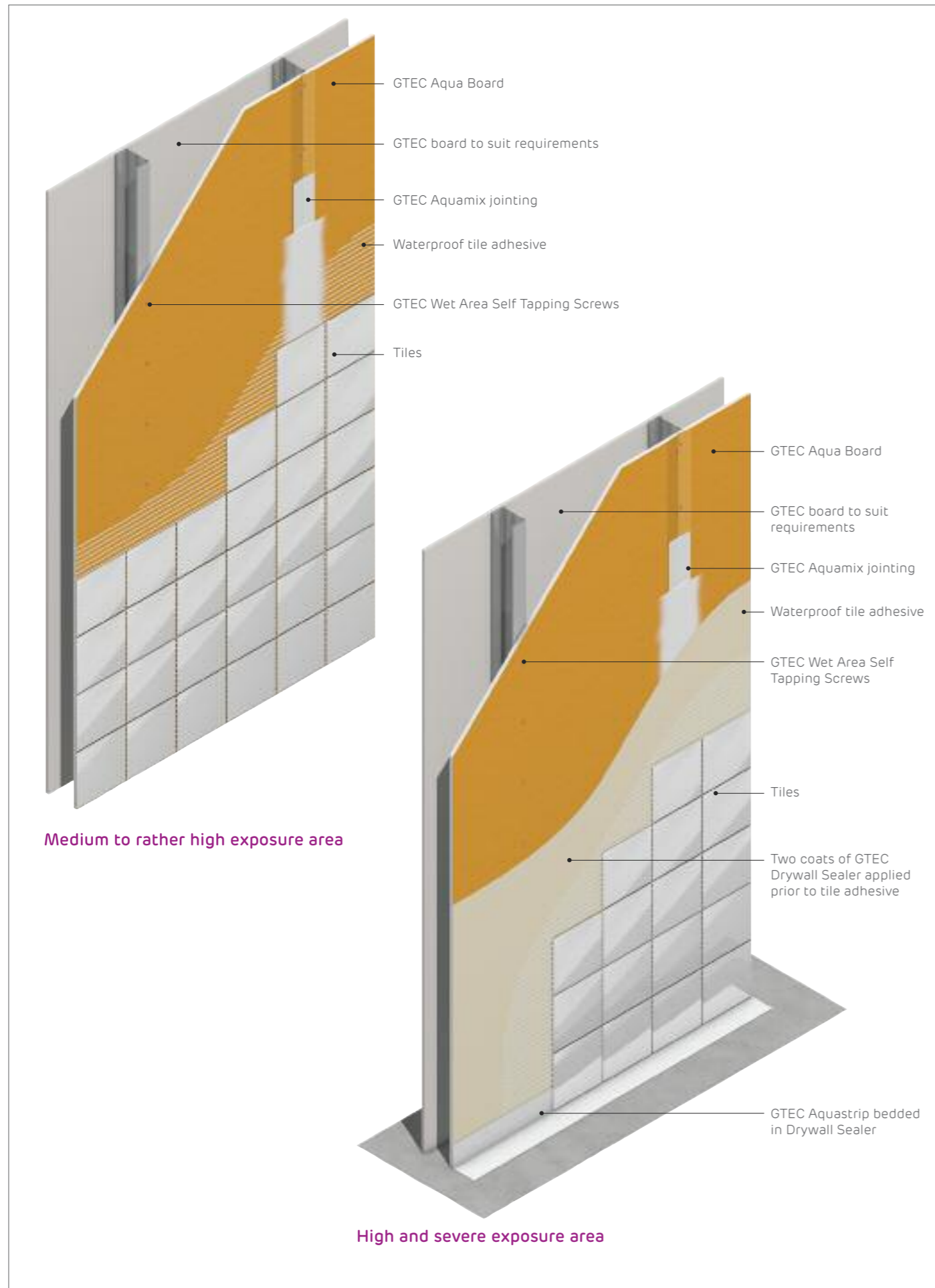
5. Additional Detailing

Water tightness around frames
To ensure water tightness around door frames and/or any apertures, a proprietary silicone sealant should be used.

Pipes passing through partition
Pipes should be sleeved and a proprietary silicone based sealant should be used to ensure water tightness between the sleeve and pipe, and sleeve and tiling.

Suspended washroom appliances
Suspended washroom appliances may be fixed to partitions using a suitable fixing and method (see the Siniat Drywall Manual). A proprietary silicone based sealant may be required around any penetrations.

Baths and Showers
A proprietary silicone sealant must be used at the junction of the shower base and/or the bath edges to the vertical walls. Follow the bath and/or shower manufacturer's recommendations for fixing requirements.



GTEC

GTEC represents quality, durability and assured performance across all our products and system solutions. Products include standard, performance and specialist boards, as well as finishing compounds, metal framing and fixings to satisfy the practical and performance needs of all new-build and refurbishment projects.

GTEC Systems are built from four key component groups:

GTEC Board

Standard, performance and specialist boards specifically designed for a wide range of construction applications, giving impact, moisture, vapour, sound and fire resistance.

GTEC Frame

A range of metal framing components for use in combination with GTEC Boards. From basic studwork to suspended ceilings and intricate curves.

GTEC Fix

A comprehensive range of screws, adhesives and other fixing components for attaching boards and connecting components.

GTEC Finish

Taping and jointing systems used for the seamless jointing of plasterboard for creating a high performance system with a perfect finish.

TECHNICAL SUPPORT

Siniat offers specification customers a range of dedicated support services to help you with compliance.

Field Based Specification Manager

Our field based specification managers are able to help with design, system selection, construction details and project specifications. Highly experienced, they can develop solutions to improve speed of installation, fire, sound and thermal performance, as well as guiding you through sector-specific requirements.

Technical Enquiryline

The dedicated Technical Enquiryline offers an immediate response to your technical queries including installation advice, product guidance, and acoustic and U-value calculations.

Technical Training Centre

We also provide a purpose-designed training centre, which has been accredited by the CITB and provides instruction in drywall installation and management for contractors and installers.

WARRANTY

GTEC Aqua Board is offered with a 6 month limited warranty when installed on the frame during the construction phase and up to 10 years product warranty according to installation instructions.

Please contact Technical Enquiryline for full warranty details.



IMPORTANT INFORMATION

Siniat is committed to the highest levels of safety at all times. This commitment extends outside our own operations to all involved in the use of our products on site.

Handling and storage

Siniat GTEC Aqua Board can be left directly exposed to all weather conditions once installed on a frame for up to 6 months.

When manually handling gypsum boards, consideration of the correct manual handling technique to limit risk, according to the Manual Handling Operations Regulations 1992.

Packs should be moved using a fork lift truck or hydraulic trolley, care should be taken to ensure that the machine is safely capable of such movements and that the operator is fully trained and competent.

Plasterboard should be stored in dry, flat conditions.

Composition

Aerated calcium sulphate di-hydrate with liners made from non-woven tissue with fillers and fibres enclosed inside the gypsum core. Core and tissues are bonded with starch. The edge glue is PVA and the water resistant additive is silicone oil. The core contains a biocide to prevent mould growth.

Physical and chemical properties

Appearance: Coloured orange paper faced flat sheets that are available in a range of thicknesses and lengths, with edge profiles being tapered edged.

Plasterboard is not a suitable product to be used as a platform or deck, it will not support body weight and therefore it is important that installers use an independent support mechanism.

Exposure controls/ Personal protection

Occupational Exposure Limits: Workplace Exposure Level (WEL)

Substance	Total inhalable	Total respirable
Gypsum	10mg/m ³	4mg/m ³
Limestone	10mg/m ³	4mg/m ³
Quartz	-	0.3mg/m ³
Man Made Mineral Fibre	-	5mg/m ³

Note: Based on 8 hour TWA period

Personal protection

Respiratory: The area should have adequate ventilation and/or dust extraction, if not a half face mask to EN 149 Class FFP1S should be used.

Eyes: Safety goggles to BS EN 166 2B5 are recommended when dust is likely to occur.

Skin: Wear overalls and suitable clothing to avoid repeated skin contact.

Hands: To limit the effect, wear protective gloves. A barrier cream can also be applied.

Pack sizes

Board thickness (mm)	Width (mm)	Length (mm)	Boards per pallet	Board weight (kg/m ²)	Pallet weight (tonnes)	Max.height incl. pallet (mm)	Code
12.5	1200	850	52	10.8	0.63	900	90320
12.5	1200	2400	52	10.8	1.62	900	90313
12.5	1200	2700	52	10.8	1.82	900	90316
15	1200	2400	40	13.5	1.59	900	90314
15	1200	3000	32	13.5	1.59	900	90317

N.B. Plasterboard is not a suitable product to be used as a platform or deck.

SUSTAINABILITY

- GTEC Aqua Board comes from Siniat, the leading innovator of sustainable solutions for dry construction
- GTEC Aqua Board comprises mainly of non-hazardous by-product gypsum giving the product a recycled content of 97% according to ISO 14021
- Lower embodied carbon than cement boards and free of the chemical hazards of these materials

RESOURCE EFFICIENCY

- GTEC Aqua Board is manufactured in the same low energy process as standard plasterboard with closed loop recycling of water and process wastes
- BRE Green Guide ratings of A and A+ are typically achieved using GTEC Aqua Board
- Easily handled lightweight product and 'score and snap' cutting makes for safe, quick and cost effective installation

RECYCLING AND RE-USE

- GTEC Aqua Board is recyclable and accepted by the GTEC Wasteline Direct service for recycling into new plasterboard
- Gypsum powder from recycled board fully meets the quality criteria of BSI PAS109* in relation to composition, paper fibre content and purity. This provides for diversion from landfill into recycling markets
- * Specification for the Production of Recycled Gypsum

SYSTEM OVERVIEW

GTEC Aqua Board custom lengths

As with all GTEC plasterboards special sizes are available upon request to ensure that you can specify the most efficient board size for your project, reducing waste and maximising cost savings.

GTEC Wet Area Screws











GTEC Aqua High Thread screws for fixing to timber. GTEC Aqua Self Drilling & GTEC Aqua Self Tapping screws for fixing to metal.

GTEC Aquamix

A water resistant ready-mixed joint cement. For use with GTEC Aqua system in all wet applications.

GTEC Aquastrip

A mesh strip used in the GTEC Aqua system to protect exposed drylining perimeters for severe wet applications.

Components	Siniat Code	Sizes
GTEC Aqua Board 	90320 90313 90316 90314 90317	12.5 x 1200 x 850 12.5 x 1200 x 2400 12.5 x 1200 x 2700 15 x 1200 x 2400 15 x 1200 x 3000
GTEC Wet Area Self Tapping Screw 	4042969 4042970	Length 32mm, Gauge 3.5mm Length 42mm, Gauge 3.5mm
GTEC Wet Area Self Drilling Screw 	4042967 4042968	Length 25mm, Gauge 3.5mm Length 38mm, Gauge 3.5mm
GTEC Wet Area High Thread Screw 	4042971	Length 42mm, Gauge 3.5mm
GTEC C Stud 	Various	Available in a variety of sizes and gauges to suit all applications. Please refer to www.siniat.co.uk .
GTEC U Track 	Various	Available in a variety of sizes and gauges to suit all applications. Please refer to www.siniat.co.uk .
GTEC Joint Tape 	90451	150m roll size
GTEC Aquamix 	183599	20kg
GTEC Aquastrip 	4041743	50m
GTEC Intumescent Acrylic Sealant Foil Roll 	4041739	0.6ltr