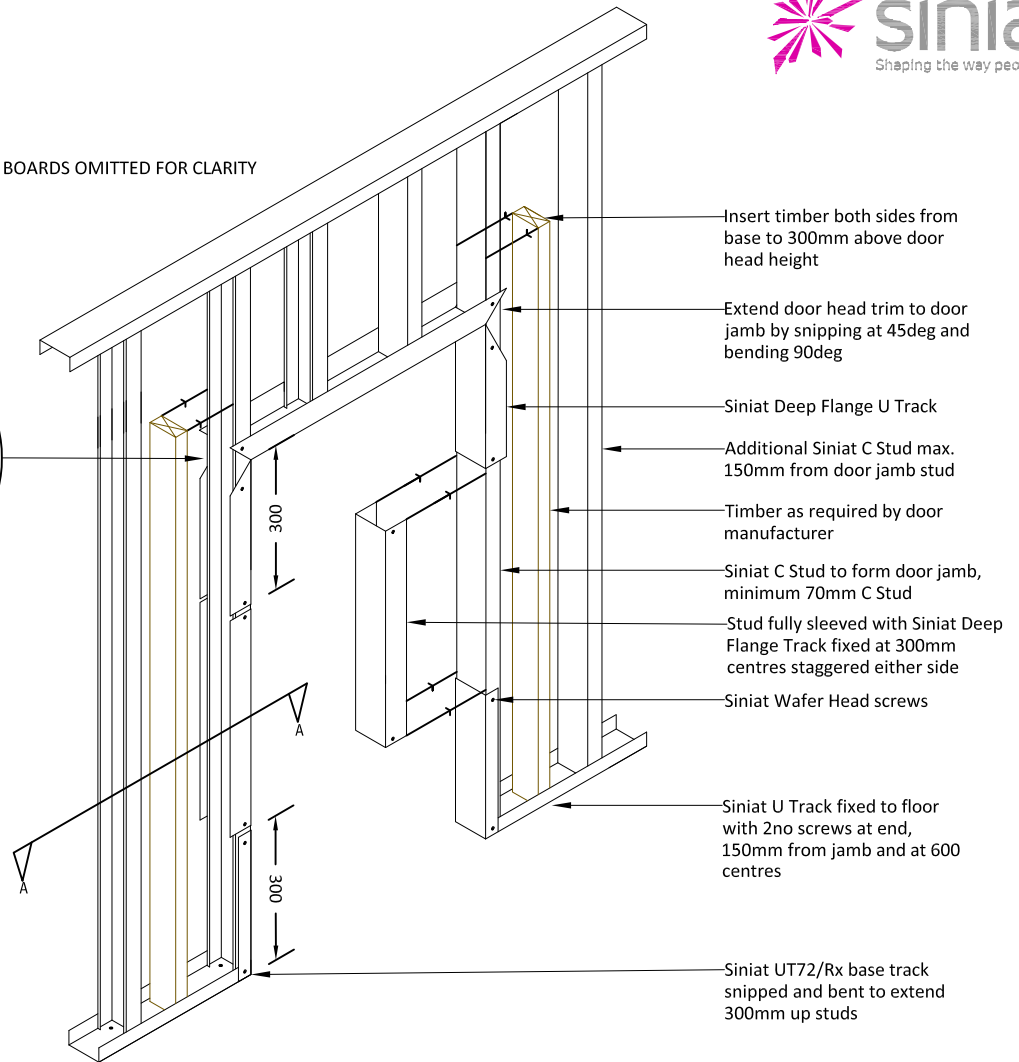
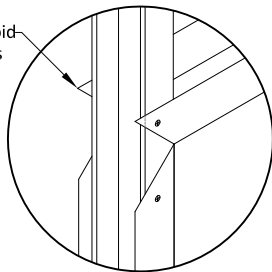


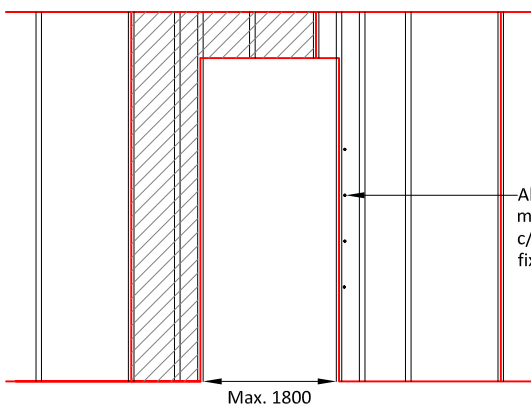
BOARDS OMITTED FOR CLARITY

Bend to avoid sharp edges

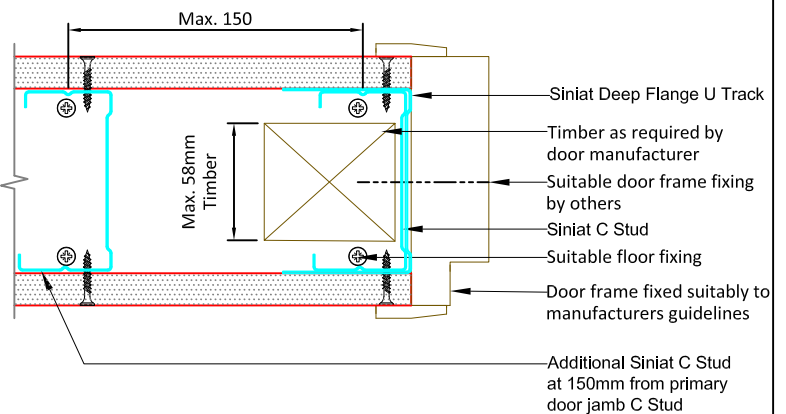


DOOR JAMB ARRANGEMENT

Note: Minimum 70mm C Stud



BOARDING LAYOUT



SECTION A-A

DOOR JAMB UP TO 100KG

A	01/09/16	FOR ISSUE	JE	MPC
REV.	DATE	NATURE OF REV.	REV. BY	APP'D
	26/08/2016		DRAWN	JE
SCALE	NTS	CHECKED	MPC	
		APPROVED	RC	
				REVISION
				A

All performance data & system specifications are for systems constructed with materials & components as shown. The inclusion or substitution of any other manufacturers materials or components invalidates both test data and system performance. The information is provided in good faith and is based upon details received, which are assumed to include all relevant facts. While it is believed to be correct, we accept no liability for its accuracy, adequacy or completeness. Recipients must satisfy themselves as to its suitability as we do not accept responsibility for any claims or consequential loss. Acceptance of the content and subsequent design responsibility rests entirely with the recipients who should then produce accepted details on their own company documentation. None of the content may be copied directly without prior approval from Siniat Technical Services.